

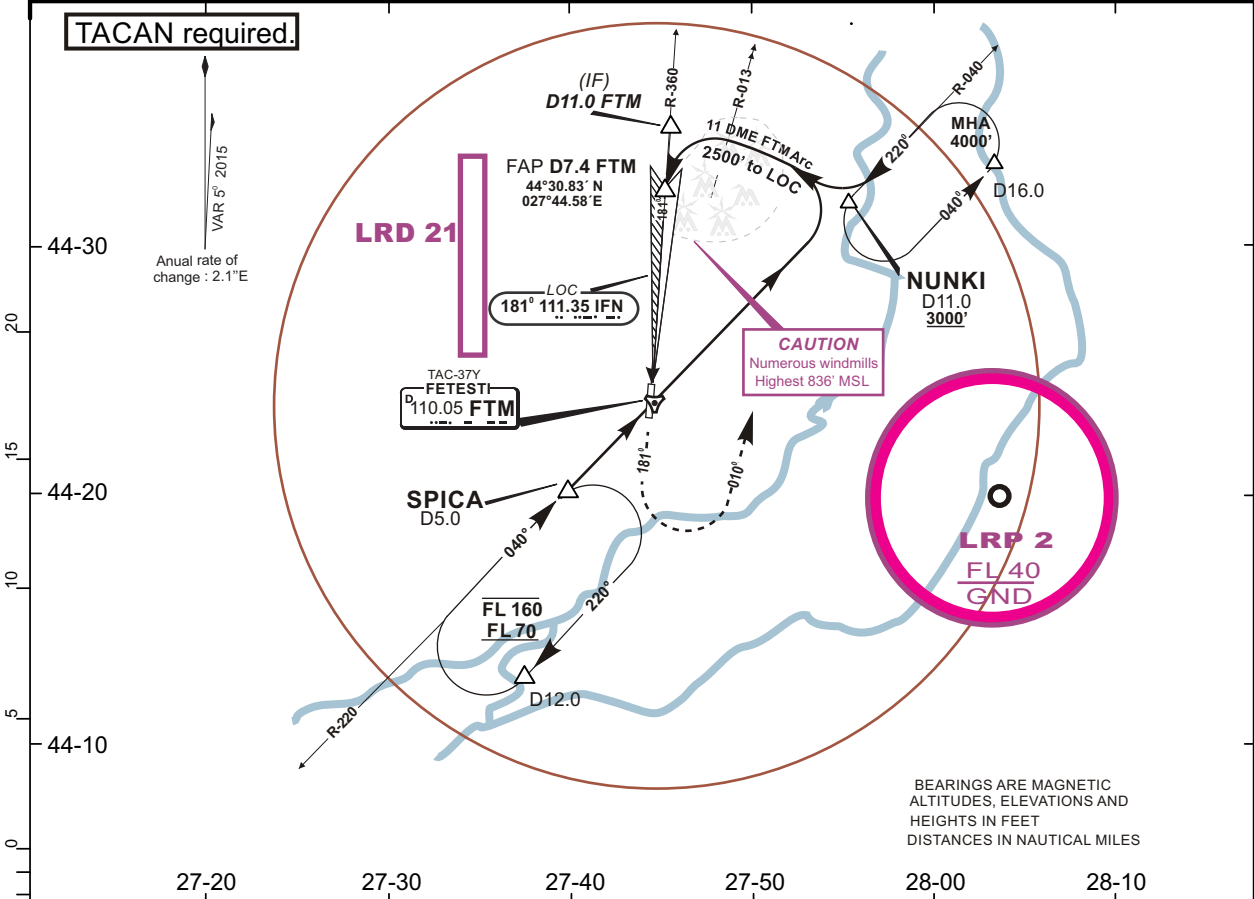
LRFT/FTM
BORCEA- FETESTI

FETESTI, ROMANIA
HI/LO ILS Rwy 18

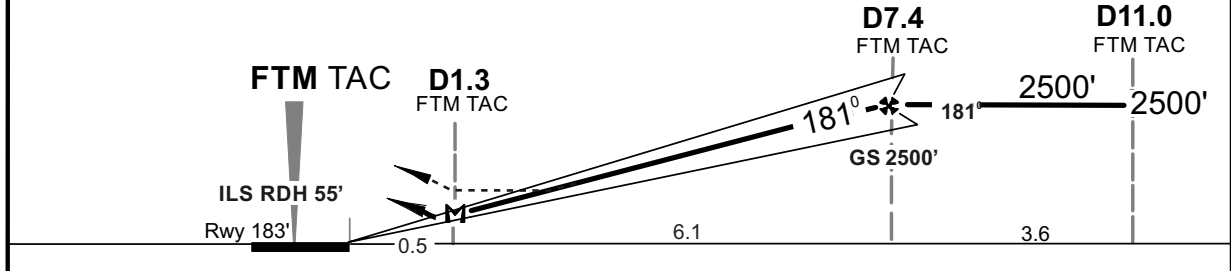
BRIEFING STRIP™

ATIS 122.525		RUBIN Approach 123.375/309.625		RUBIN Tower 119.325/232.850		
LOC IFN 111.35	Final Apch Crs 181°	GS D7.4 FTM TAC 2500' (2317')	ILS DA(H) Refer to Minimums	Apt Elev 183' Rwy 183'		
MISSED APPROACH: Climb on RWY HDG to 1500' then turn left Hdg 010° climbing to 3000' to intercept R-040 FTM TACAN						

Alt Set: hPa Rwy Elev: 7 hPa Trans level: By ATC Trans alt: 4000'



	27-20	27-30	27-40	27-50	28-00	28-10
LOC (GS out)	FTM DME 7.0	6.0	5.0	4.0	3.0	2.0
	ALTITUDE 2288'	1949'	1609'	1270'	930'	590'



Gnd speed-Kts	70	90	100	120	140	160	ALS-I PAPI	1500'	Hdg 010° 3000'	R-040 FTM TAC
ILS GS or LOC Descent Angle	3.2°	396	510	566	679	793				

Standard. STRAIGHT-IN LANDING RWY 18				LOC (GS out)		CIRCLE-TO-LAND		
A: 383' (200')		C: 393' (210')		DA(H) 610' (427')		Max Kts	MDA(H)	VIS
B: 383' (200')		D/E: 403' (220')		ALS out				
A	FULL	Limited	ALS out	ALS out	RVR 1600m	100	685' /(502')	1600m
B	RVR 550m	RVR 750m	RVR 1200m	RVR 1000m	RVR 2500m	135	685' /(502')	2000m
C						180	785' /(602')	2400m
D	RVR 800m	RVR 1000m	RVR 1600m	RVR 1800 m		205	800' /(617')	4800m
E						250	800' /(617')	4800m